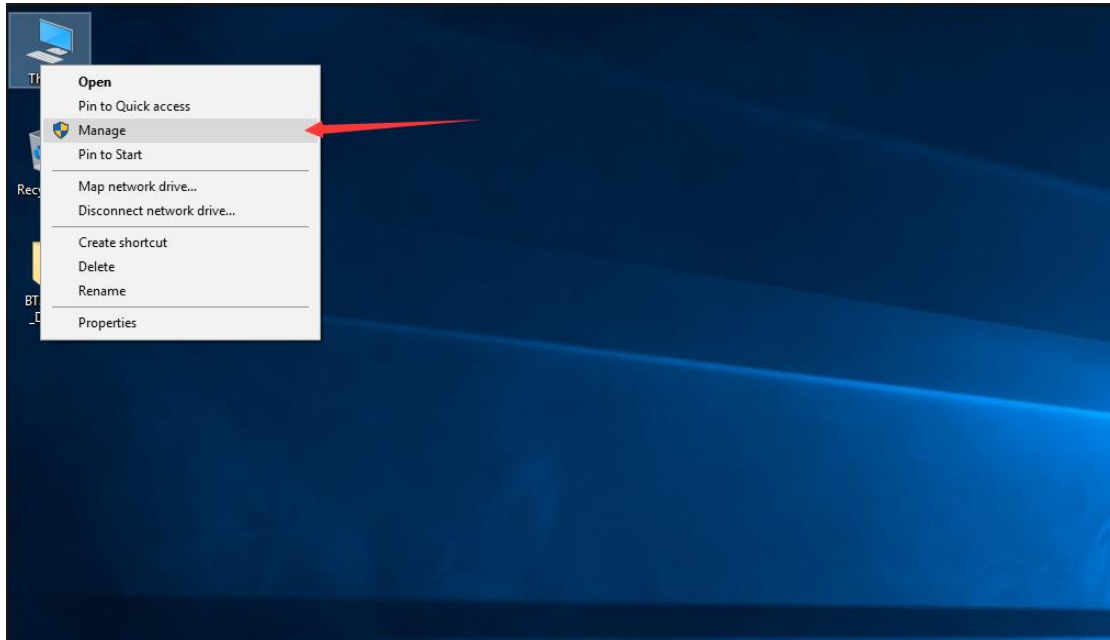


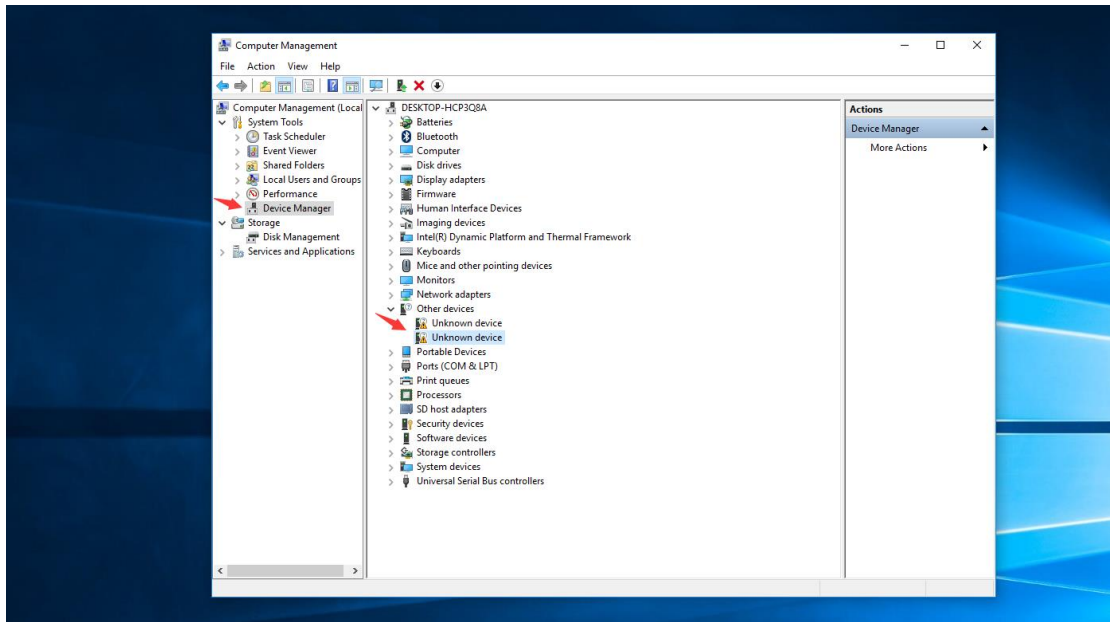
# Driver installation tutorial

(Suitable for BT3 PRO Z83 Z83II Z83V)

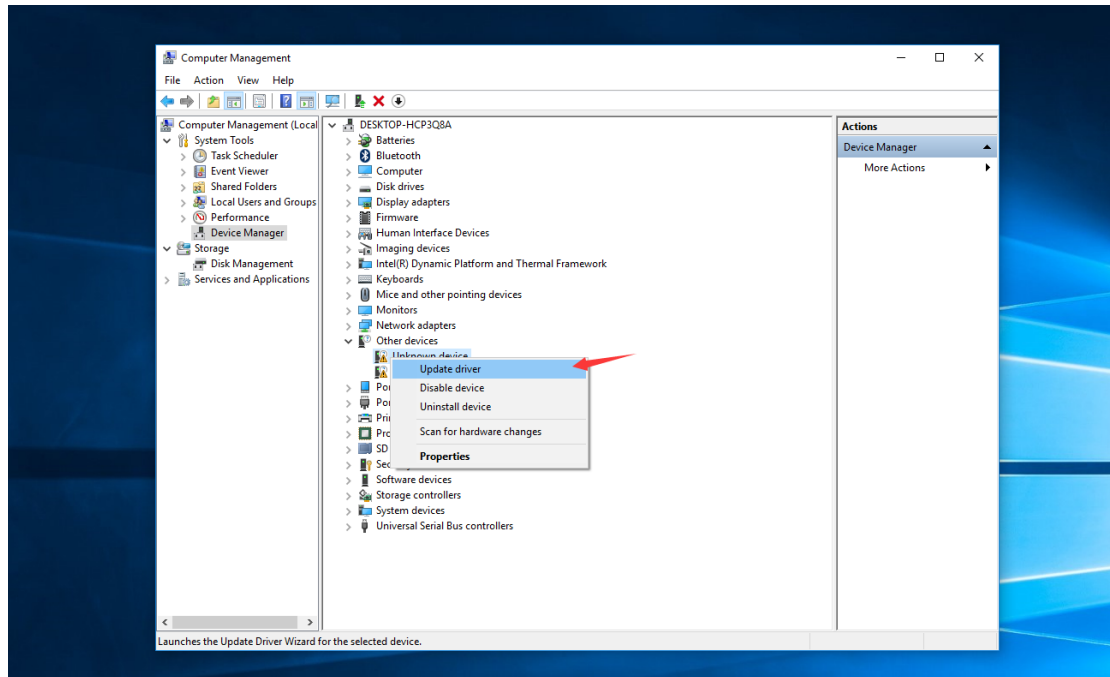
- 1: First , Download the driver files you need
- 2: Find the computer icon, right click and select Manage



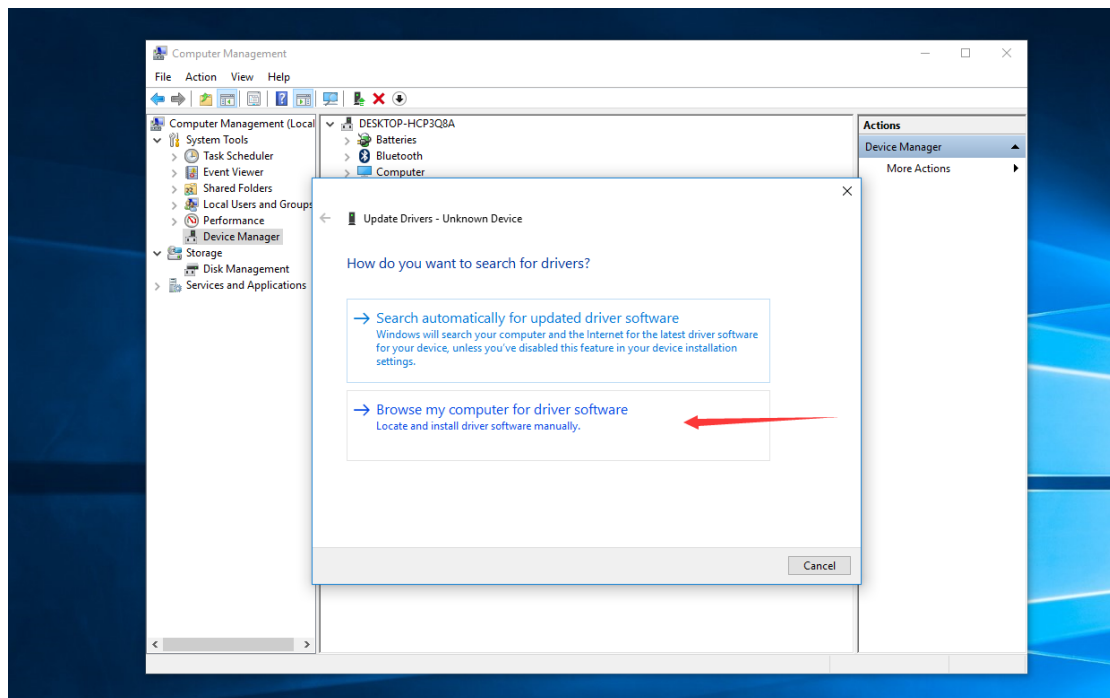
- 3: Click on Device Manage, Find the device with an exclamation point on the right



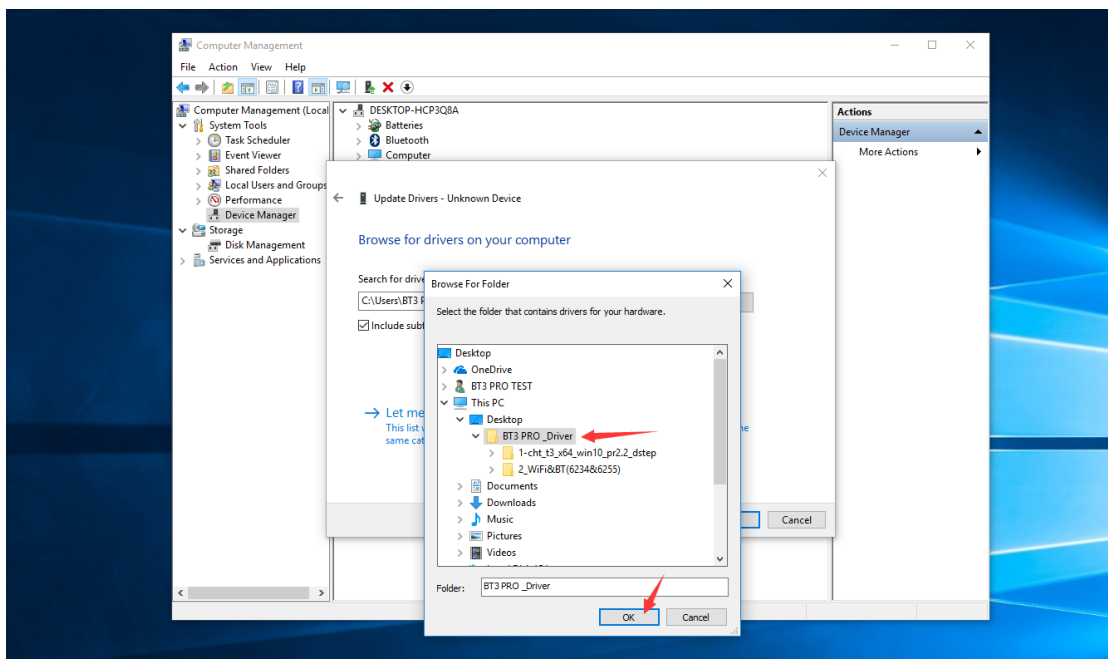
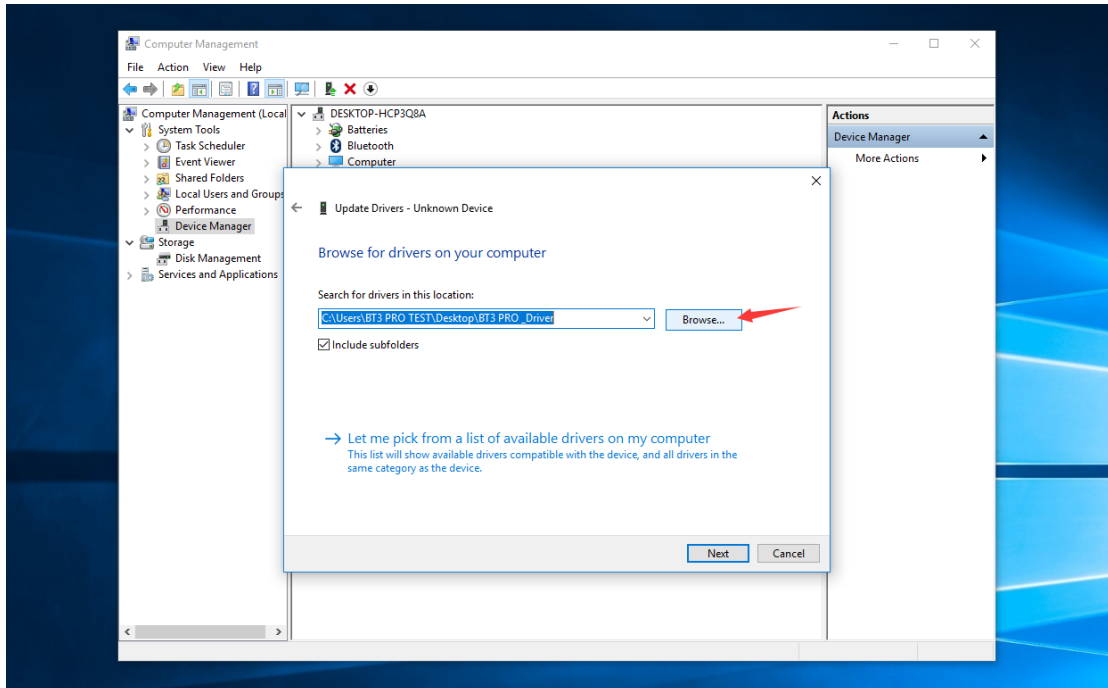
#### 4: Right click and select Update driver



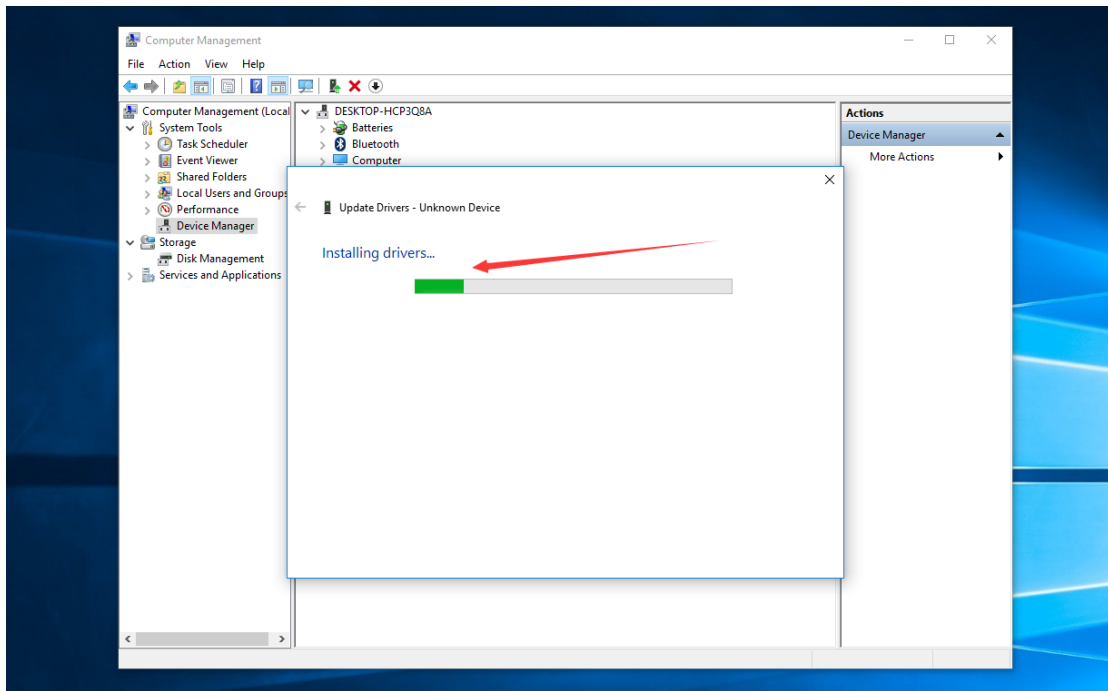
#### 5: Select : Browse my computer for driver software



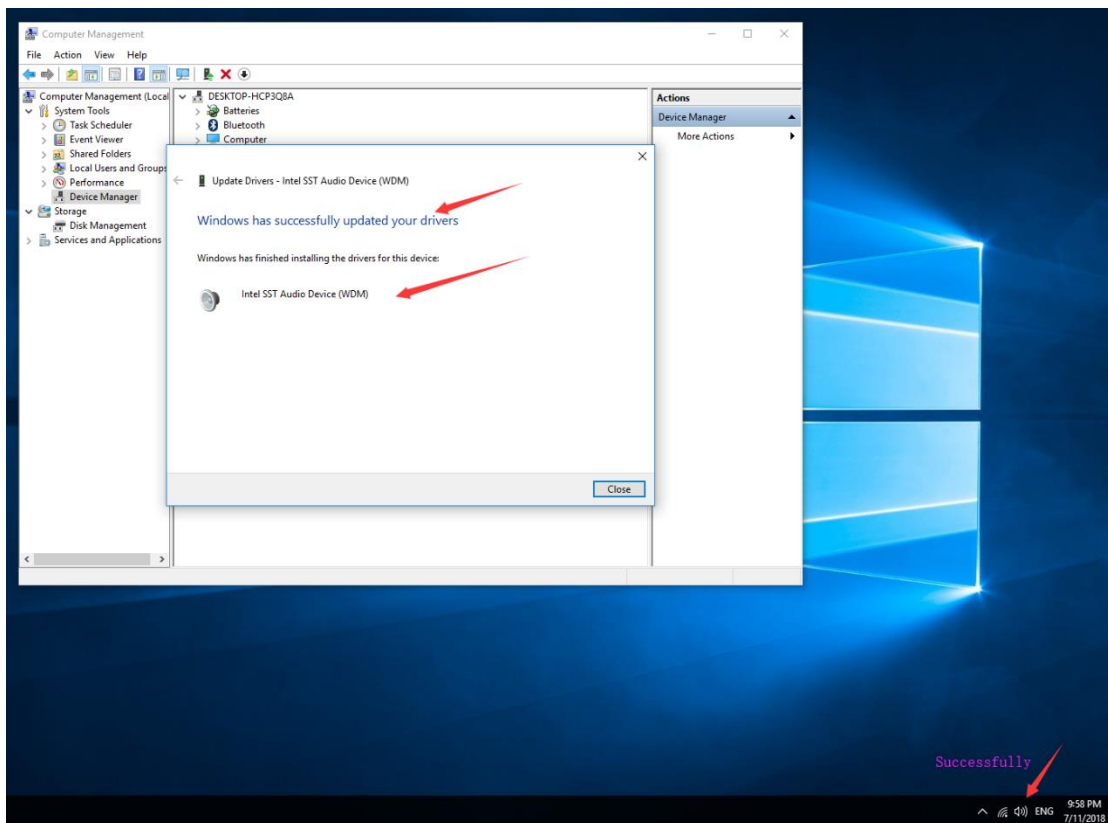
6: Click browse, find the Driver file you downloaded, just select the Drive folder, click Next, it will automatically search for the corresponding driver.



## 7: Automatically searching and installing



## 8: The driver was successfully installed



End.....