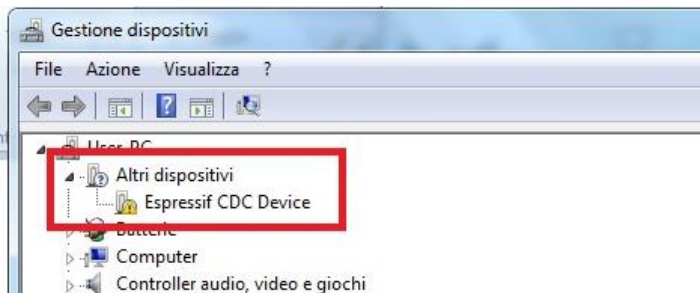


AUFERO LASER 1 Driver issues (WIN7/8)

Resolution for Driver issues on ESP MCU Espressif CDC Device Error.

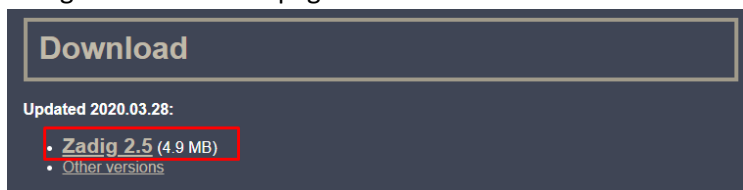
Please connect your Aufero Laser 1 to the computer and power ON the machine making sure the homing cycle is complete.



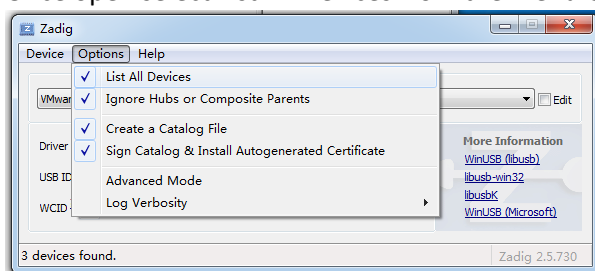
Applicable to WINDOWS 7 and Windows 8 ONLY

Visit <https://zadig.akeo.ie/>

Navigate lower on the page and click The download button

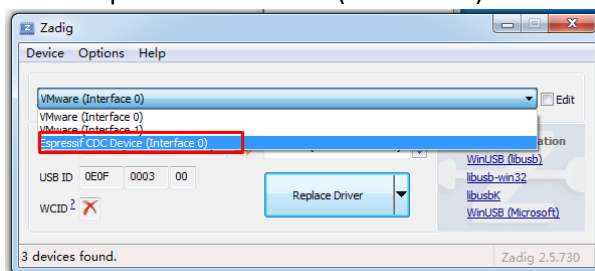


- Once download is complete, please run the application with Administrator Rights
- Once open select List All Devices from the menu Options.

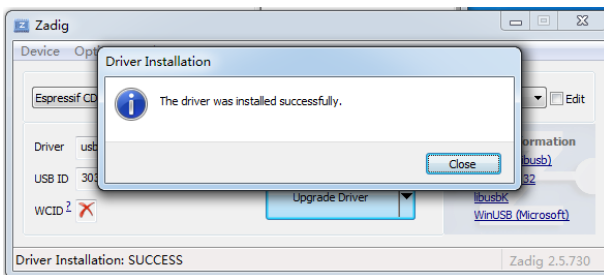
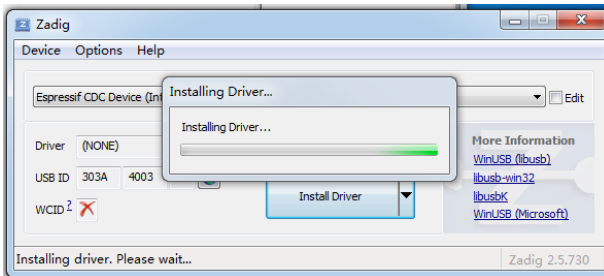
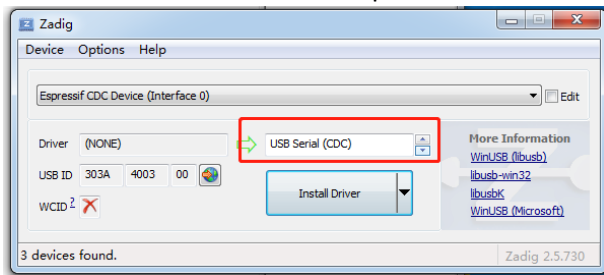


Wait for the refresh

- Select Espressif CDC Device (Interface 0) from the drop-down list



- Select USB Serial (CDC) from the list of drivers available, click the Install Driver button, and wait for the installation to complete.



- When you're done, you can close the Zadig software
- The New Espressif CDC Device (Interface 0) (COM X) port in Device Manager. Note the COM number might be different in your machine

